



BIOSITE

ASSA ABLOY

Efficiency. Insight. **Control.**

Proven technology-enabled solutions
developed for the construction industry.

www.biositesystems.com



Who we are /

We are innovators in technology and software, helping transform the construction industry, whilst giving our customers peace of mind they are in control of their sites.

Proven throughout the UK

We are the UK's fastest growing partner of pre-site, on site and insight solutions for construction.

1,300+
projects

Flagship projects:

- Hinkley point C
- HS2
- A14
- MOD
- Amazon



650,000+ workers live on databases

5 million +
transactions
per month

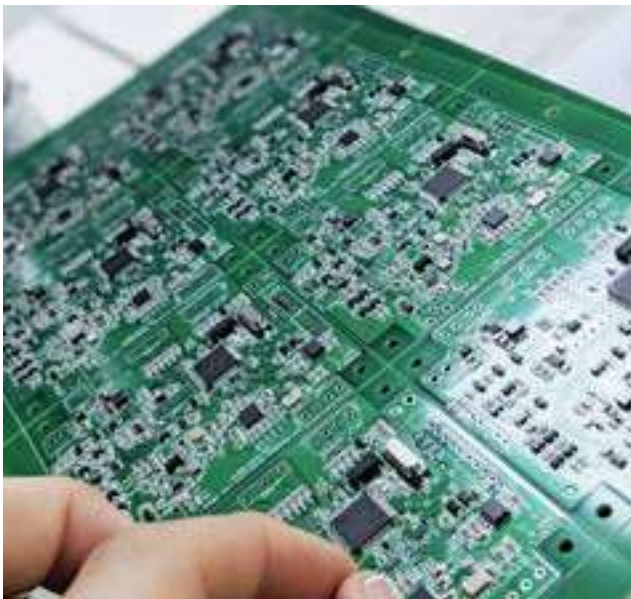
650 +
live projects

2,800
mobile apps
installed



A solution for every site

Running a successful construction business is complex and challenging, especially managing a highly transient workforce.



Biosite has the software and hardware capabilities to tailor an end-to-end solution that meets the specific needs of every site, for every customer. We consistently embrace new technologies to develop innovative solutions that respond to customer needs and deliver results.

Everything is developed by Biosite in-house, with dedicated manufacturing, software, installation and service teams on hand to deliver the best customer experience.



1/ Market-leading technology

Biosite technology is underpinned by a unique biometric algorithm, designed for the low quality fingerprints found in construction. It is more accurate than standard fingerprint scanners, facial recognition or conventional swipe card and PIN-based identification systems. It is also faster, with rapid fingerprint matching in < one second for quicker throughput and delivers 100% accuracy at enrolment.

Proven Biosite technology ensures the accuracy of data, which in turn guarantees credible business insight.

2/ Powerful reporting and insight

Bespoke site and group-level reporting is available securely online, in real time, to optimise decision-making. Reports are created from the highest quality biometric data to provide optimum insight and maximum confidence – putting you in control.

Drill down into the data for detailed information in any area; trade or skills, direct employees or subcontractors, site or region; to assess whether there are potential risks to safety, productivity or quality of build. The corporate portal allows any updates to be managed at a group level, with amends cascaded to all sites for maximum efficiency.

3/ One person, one profile

Biosite's workforce management solutions generate an accurate single operative profile – for direct employees and subcontractors – allowing main contractors to establish a true working history, credentials and warning record of everyone on site.

This means Biosite will match and de-duplicate multiple profiles as operatives move around sites, which also ensures GDPR compliance.

4/ Improving productivity and profits

Adopting technology-enabled solutions will not only reduce manual data processing and paperwork but will establish a clear record of all site activity. Improving visibility and providing traceability will enable more targeted decision-making on site and at a group level; ensuring projects are completed on time, to a high quality and safely.

Saving time and managing situations effectively, in real time, will in turn deliver meaningful productivity improvements and cost savings.

We ensure our customers are
in **control** so that operations
run as smoothly as possible.



Modernising UK construction

Biosite's purpose is to support the transformation of the construction industry by developing technology-enabled services to optimise operational efficiency, improve health and safety and ensure compliance for construction projects.

Underpinned by a unique biometric algorithm designed for the low quality fingerprints found in construction, Biosite provides market-leading solutions – split into pre-site, on site and reporting & insight – that address inefficiencies and reduce paper-based processes at site and group level.

At the heart of all Biosite solutions is the capture of accurate data that is converted to valuable real-time insight, via simple and intuitive reporting platforms, to enable more informed decision-making. Putting you in control.

Product overview

1/

Pre-site

- Online Induction

2/

On site

Workforce Management

- Access Control
- Mosaic Safety Briefing Manager
- Mosaic Mobile Competency Checks
- Mosaic Fatigue Management
- Digital Signage

Task Management

- Digital Forms and Workflows:
Tasks, Permits, Notices, Audits
- Snagging Tool

Material Management

- Mosaic Asset Management
- Delivery Management

Fire Safety & Security

- Wireless Fire Alarms
- Site Support & Security
- CCTV

3/

Reporting & insight

- Business Insight - Sense
- API

1/

Pre-site



Online Induction

Saves valuable time and ensures only operatives with the right credentials and skills are permitted access to site. Linked to the CSCS database for validation, it removes paperwork and reduces your costs even before an operative starts work.





2/

On site

Workforce Management /



Access Control

Developed specifically for the construction industry to respond to the challenges of managing a highly transient workforce. Captures accurate biometric operative data using a range of devices, from turnstiles to tablets, to optimise operational efficiency, improve health and safety and ensure compliance on site.



Mosaic Safety Briefing Manager

Establish a record of safety briefings for every operative on site, including toolbox talks and inductions; all traceable through fingerprint, mobile or card-based access.



Mosaic Mobile Competency Checks

For linear sites with no fixed perimeter, utilise a mobile solution to effectively manage workforce skills, competencies and qualifications.

Capture operative data using multiple devices including tablets, mobile apps or cards. Quickly identify skills gaps and alternative operatives with appropriate skills, as well as pre-empt upcoming training requirements.



Mosaic Fatigue Management

Manage operative fatigue risk by monitoring working patterns and travel times through a simple to use digital system, which ensures compliance with the HSE fatigue management model.



Digital Signage

Display real-time operative, site and safety information via media screens, including tracking key personnel on site such as first aiders and fire marshals. Screens can be tailored to include timed, topical information such as the lunchtime news or weather reports, in between site statistics.



Task Management /



Digital Forms and Workflows: Tasks, Permits, Notices, Audits

Convert and collect all project documentation on a digital platform to reduce paperwork and increase visibility and traceability.



Snagging Tool

Manage snags effectively and in real time via mobile app technology. Enables managers to add photos and notes for each snag, designated to specific areas of a site. Monitor job progress and sign off once complete.



2/

On site

Material Management /



Mosaic Asset Management

Track stock and assets on site in real time. RFID tags and barcodes are linked to a mobile app that checks what has been assigned against individual worker records.



Delivery Management

Schedule and monitor deliveries to site in order to ensure project progress. Track late or unauthorised drops and manage subcontractor delivery performance.



Fire Safety & Security /



Wireless Fire Alarms

Market-leading EN54 certified wireless fire and first aid alarm system manufactured in-house for quality assurance. Cost effective, compliant solution with enhanced benefits, including automatic integrity check and site zoning capability. Enables automatic turnstile release and roll call printing, when linked to Biosite's Access Control system.



Site Support & Security

Protect sites with experienced and reliable manned solutions including security guards, gatemen, dog handlers and concierge staff. Fully vetted SIA-trained security officers have the added benefit of understanding Biosite technology-enabled solutions, to monitor activity out of hours.



CCTV

Temporary and remotely monitored CCTV systems to keep your workforce safe, deter criminals or protect assets; providing peace of mind on site.



3/

Reporting & Insight



Business Insight - Sense

Converts real-time, quality data into a single source of meaningful insight, to optimise decision-making. A tailored, interactive dashboard provides visibility of live scenarios on site, enabling a quick response to rectify issues, make efficiency savings or ensure quality and compliance.



API

Biosite's open API enables direct integration with existing customer systems to maximise efficiency and performance, whilst reducing potential conformance issues.





Achieving 100% conformance for CSJV HS2 enabling works

Working on behalf of HS2, the Costain Skanska Joint Venture (CSJV) was responsible for delivering the South section of the £900million* essential enabling works programme.



*Total budget for Phase One of the HS2 enabling works programme, including Area South, Area North and Area Central.

CSJV quickly recognised the need for a sophisticated workforce management and access control system, to respond to the complexities of the project and ensure total visibility of the almost 3,500 active workforce across 21 sites.

“

Biosite's Mosaic solution provided vital clarity around an incredibly complex project, which was critical to optimising performance during the HS2 enabling works.

”

Allison Cameron,
SHE Administration manager,
Costain Skanska Joint Venture

1/

Our solution

Biosite's Mosaic competency management system – which has been developed for linear construction projects – was tailored to respond to CSJV's specific challenges to capture and analyse data that would be valuable at both a site and corporate level.

Using multiple devices to capture data, the system provides individual traceability around:

- Access control (biometric and card access)
- Online induction
- Competency management
- Ethnicity, Diversity & Inclusion (EDI) data management
- Fatigue management
- Time and attendance
- Safety briefings and toolbox talks
- Skills checking

2/

The results

Deployment of Biosite's Mosaic solution has resulted in an unprecedented 0% non-conformances reported at internal audit.

The system has been integrated with existing CSJV systems to maximise efficiency and performance, whilst reducing potential conformance issues. This allows approved operatives to travel between sites, with only site-specific inductions needing to be recorded on a mobile device at each location, which also ensures GDPR compliance.

CSJV is now using the system to capture toolbox talks, briefings and a roll call on a mobile application. At a corporate level, the system is being utilised for comprehensive, real-time reporting to analyse key areas including worker competencies, time and attendance and skills gaps.

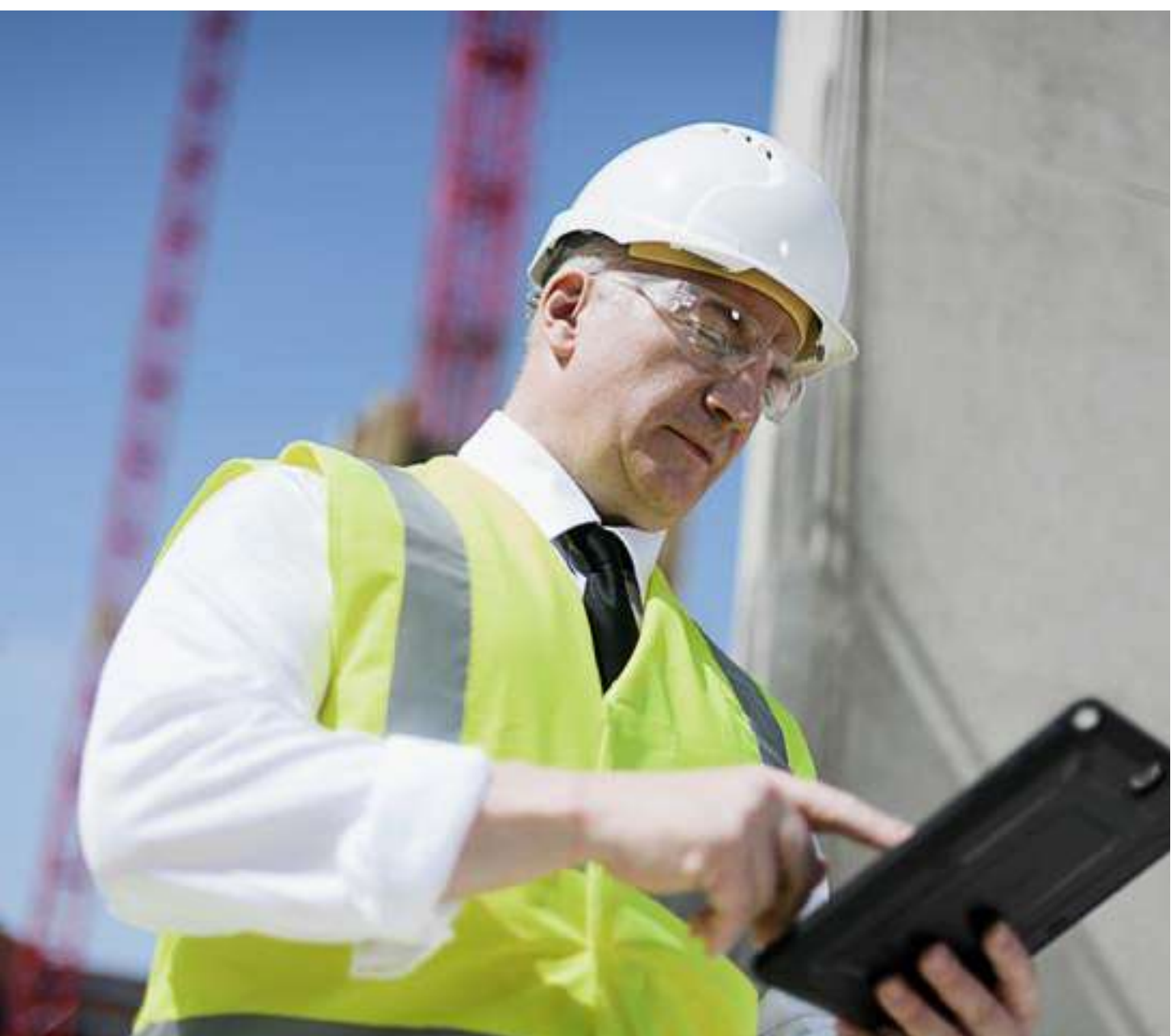
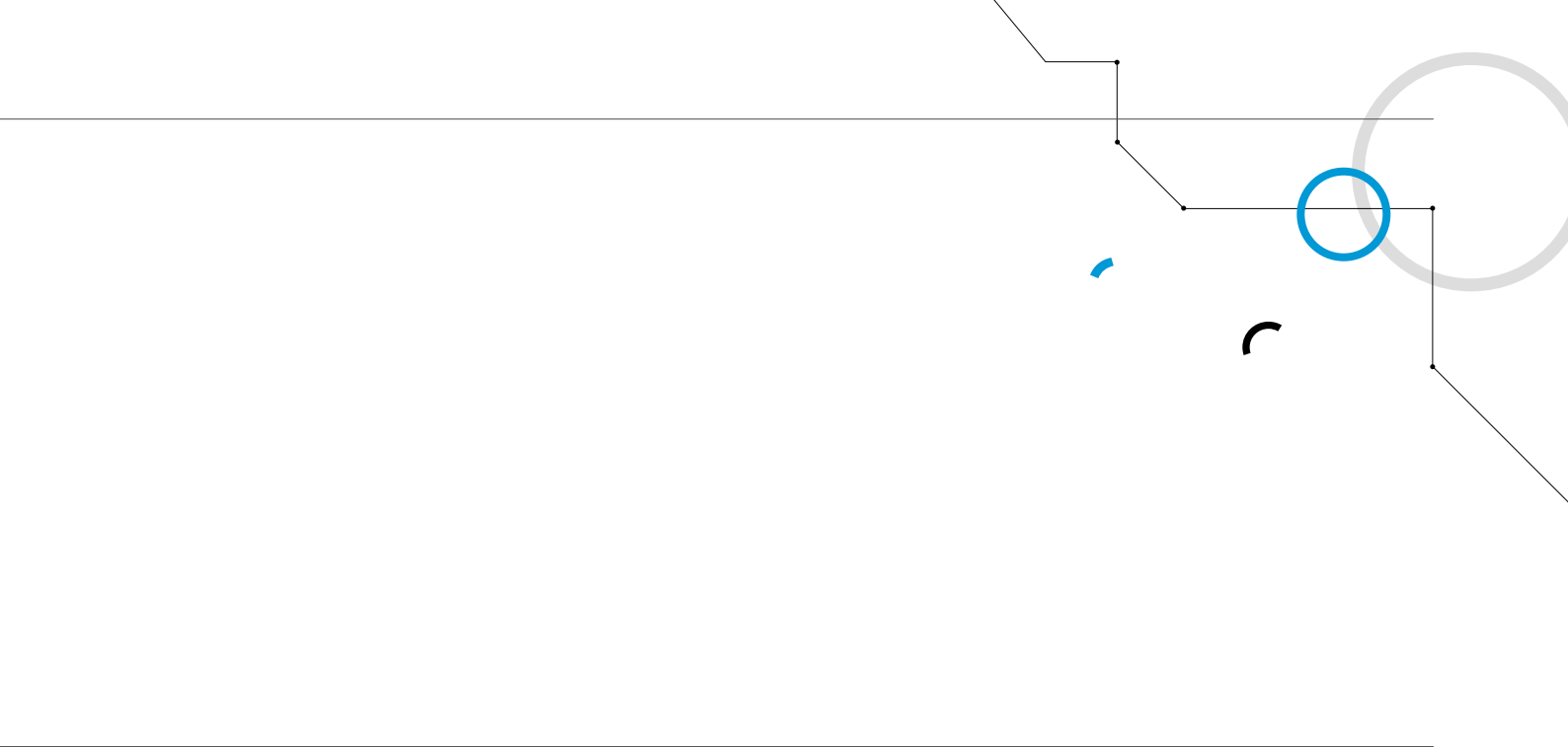
Accurate data. Powerful insight.

Harnessing data and creating powerful insight will help transform how construction sites are managed. Without business insight, it's challenging to have visibility of real-time scenarios on site. This compromises the ability to act quickly and rectify issues, until after the event.

Biosite's business insight tool – Sense – converts real-time, quality data captured from proven biometric and mobile workforce management solutions to enable better decision-making now and for the future.

Sense can drill down into the data to establish a true working history of everyone on site, in real time. For example, it can analyse the skill level of subcontractors and the level of operative churn, to assess whether this is impacting productivity or quality of build. Saving valuable time and money, not just on one site but potentially group-wide.

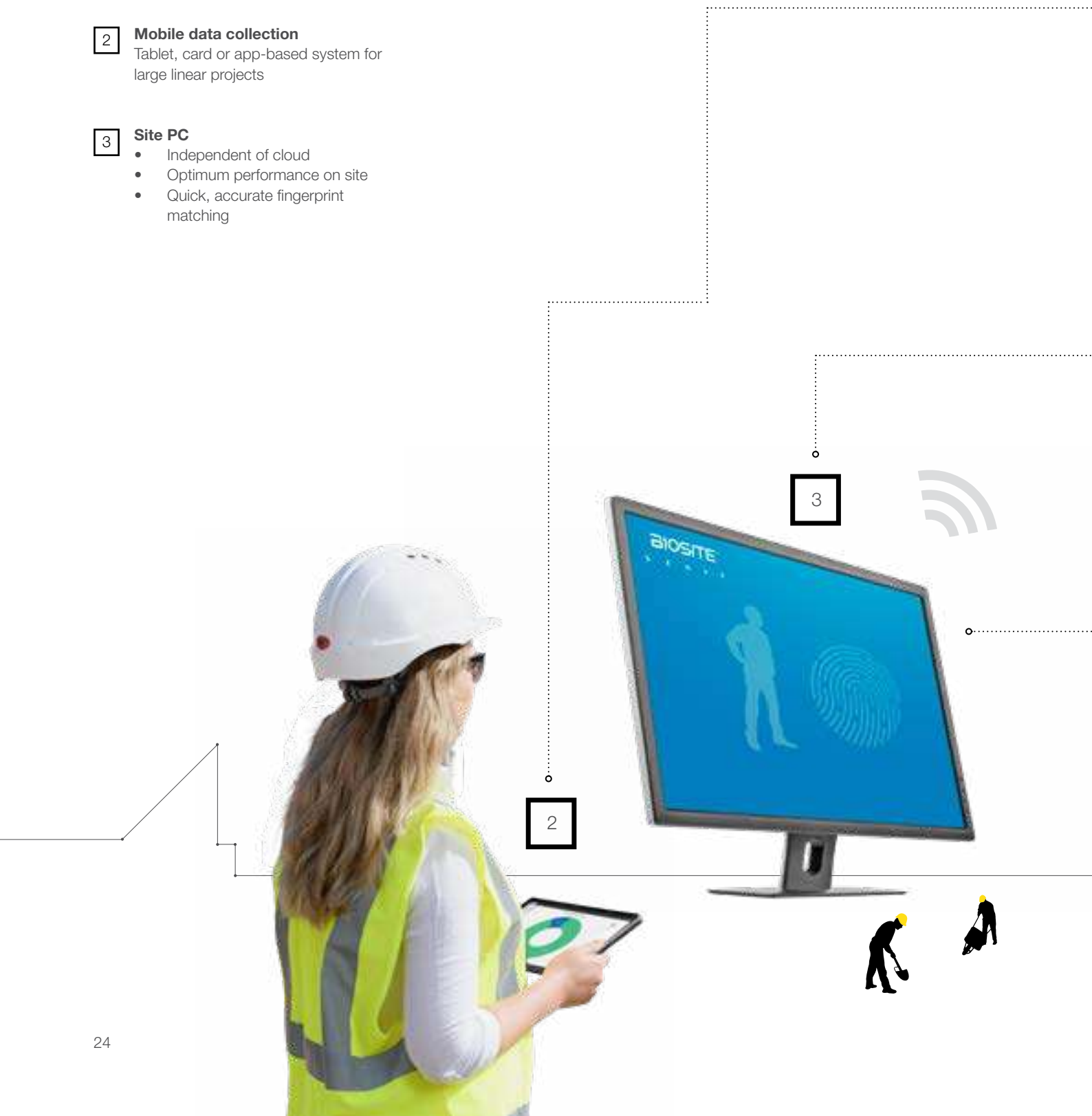




Data collection

Accurate data is captured via Biosite's market-leading biometric workforce management solutions across multiple devices; from pods and turnstiles to tablets and mobile apps.

- 1 Fixed access control system**
Turnstile, pod, scanner
- 2 Mobile data collection**
Tablet, card or app-based system for large linear projects
- 3 Site PC**
 - Independent of cloud
 - Optimum performance on site
 - Quick, accurate fingerprint matching



Centralised cloud-based system

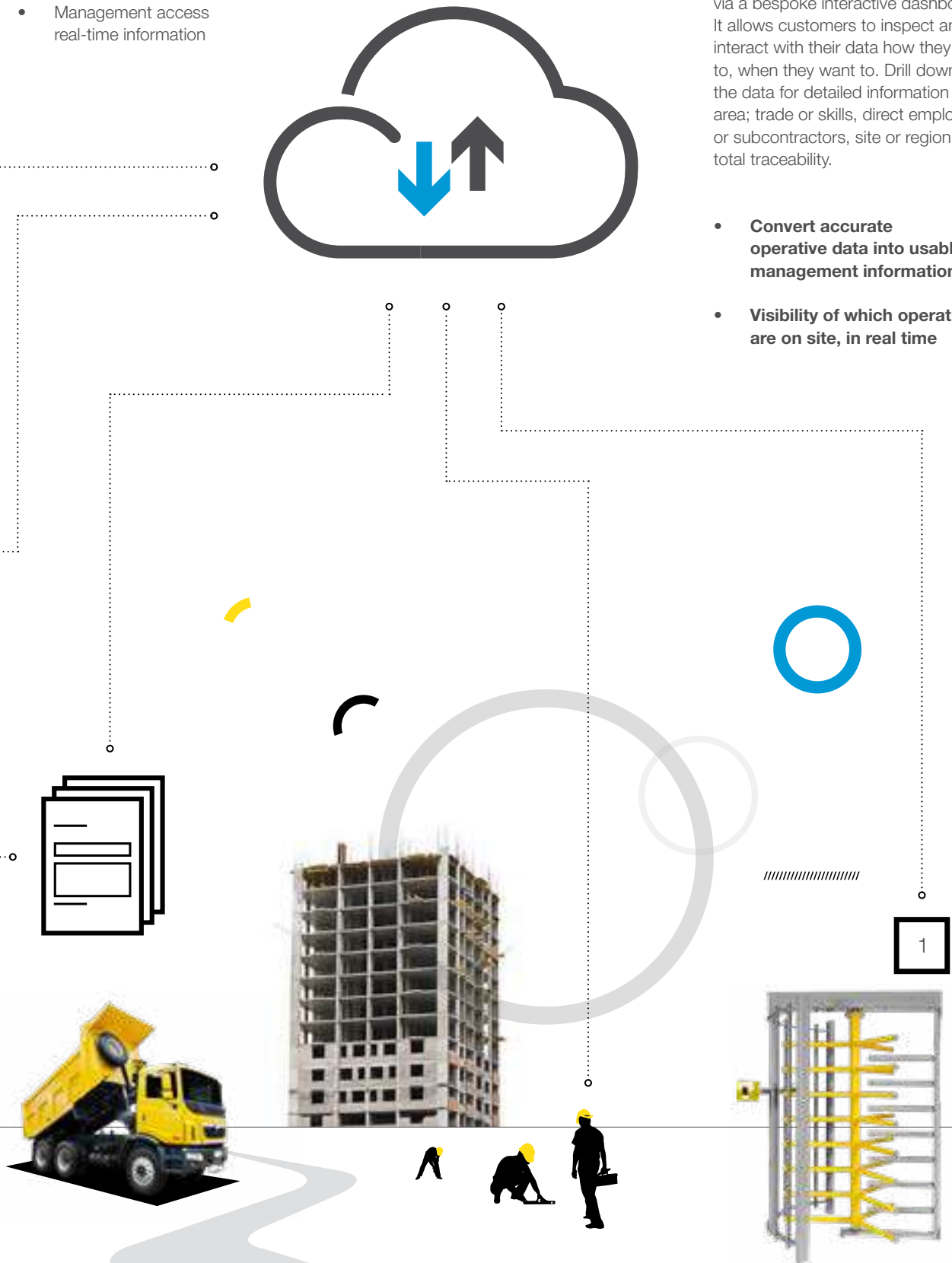
Site PC synchronises with cloud.

- Fully configurable reporting dashboards
- Management access real-time information

Insight creation

Captured data is converted into a single source of meaningful insight, via a bespoke interactive dashboard. It allows customers to inspect and interact with their data how they want to, when they want to. Drill down into the data for detailed information in any area; trade or skills, direct employees or subcontractors, site or region; for total traceability.

- **Convert accurate operative data into usable management information**
- **Visibility of which operatives are on site, in real time**



“

We provide technology-enabled solutions that optimise operational efficiency, improve health and safety and ensure compliance for major projects, to ultimately support the digital transformation of the construction industry.

*Li Wang, Managing Director,
Biosite Systems Ltd*

”





BIOSITE

ASSA ABLOY

Contact Us

Biosite Systems Ltd.
Lancaster House,
Drayton Road,
Solihull, B90 4NG

T / 0121 374 2939
E / info@biositesystems.com

