

# Access Control

Market-leading biometric and wireless technology providing real-time visibility of your workforce.





Developed specifically for the construction industry to respond to the challenges of managing a highly transient workforce, Biosite's Access Control solution captures valuable data using a range of devices, to optimise operational efficiency, improve health and safety and ensure compliance.

### A solution for every site

From turnstiles to tablets, cards to mobile apps, Biosite has flexible software and hardware capabilities to tailor an end-to-end access control solution that meets the specific needs of every site, for every customer. Everything is developed by Biosite in-house, with dedicated manufacturing, software, installation and service teams on hand to deliver the best customer experience.

#### Hardware portfolio:

- Biometric fingerprint readers
- Turnstiles
- Portable tablets
- Cabins and pods
- Time and attendance boards
- Card-based system
- Tally systems



### Why Biosite?

#### Unique biometric algorithm

Biosite technology is underpinned by a unique biometric algorithm, designed for the low quality fingerprints found in construction. This ensures accuracy, with rapid fingerprint matching in < one second for quicker throughput.

Biosite's Access Control solution links this unique biometric data to operative information and site access for total traceability.

#### One person, one profile promise

Biosite's solution generates an accurate single operative profile – for direct employees and subcontractors – allowing main contractors to establish a true working history, credentials and warning record of everyone on site.

This means Biosite delivers 100% accuracy at enrolment, with the ability to match and de-duplicate multiple profiles as operatives move around sites; also ensuring GDPR compliance.

#### Online induction

Saves valuable time on site and ensures only operatives with the right credentials and skills are permitted access. Linked to CSCS database for verification, with a clear record of induction completion and accreditation rates.

#### On site and group-level insight

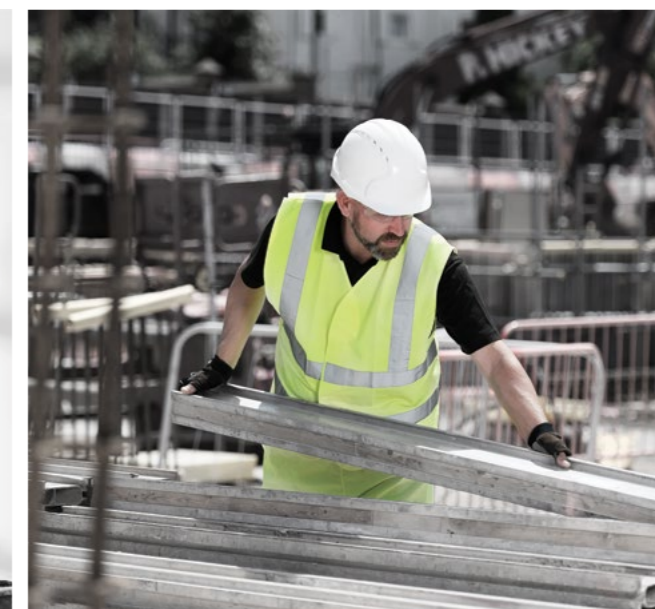
A site-based PC maintains optimum performance locally and regularly synchronises with the cloud to upload the latest data to a corporate portal; providing visibility at a group level. Bespoke site and group level reporting is available securely online, in real time, to optimise decision-making.

#### Accreditation management

As a trusted IT partner of the CSCS scheme, Biosite's system reads and imports CSCS SmartCard and photographic information. Operatives are automatically locked out of site if their cards are flagged as fake or their accreditations have expired, with the option of setting up credential expiration alerts.

#### Full integration capabilities

Biosite's Access Control solution can be integrated with complementary products and services, including Wireless Fire Alarms and Delivery Management.





## Features and benefits

- Rapid fingerprint matching in < one second
- Unique ability to de-duplicate profiles across multiple sites using 'one person, one profile' promise
- Site access only granted once fingerprint and accreditations have been checked and verified
- Fingerprint can also be used to track 'Toolbox Talks', time and attendance and local labour / business scheme data
- Accidents and near misses can easily be recorded and used to produce accurate AFR reports
- Corporate Social Responsibility (CSR) and Ethnicity, Diversity and Inclusion (EDI) information can be monitored, including carbon summaries, recycling and waste to landfill rates, apprenticeships and local labour usages, etc.
- The Biosite system is designed to work on or offline, as it uses a local site-based PC. Regular synchronisation via a secure cloud portal to ensure data is safely recorded, uploaded and accessible in real time
- Biosite are the data processors and all data is held in our UK data centres; the data is owned by our customers
- Biosite is ISO 27001 certified, which ensures data is secure and GDPR-compliant
- The corporate portal allows any updates to be managed at a group level, with amends cascaded to all sites
- Media screens can be installed at multiple points around a site to communicate health and safety messages, as well as real-time dashboards displaying critical information such as number of trades and subcontractors, first aiders, fire marshals etc. on site
- Integration with Biosite's Wireless Fire Alarms means turnstiles are set to free spin upon fire alarm activation, as well as automatic fire roll call print out
- When linked to Biosite's Delivery Management tool, the system facilitates efficient scheduling and BREEAM CO2 recording

